

Rolfe East

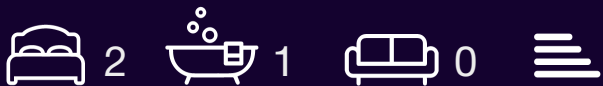


Greenford Road, Greenford, UB6 8QT

£285,000

- Superb Location
- Through Lounge / Dining Room
- Two Large Double bedrooms
- Communal Gardens

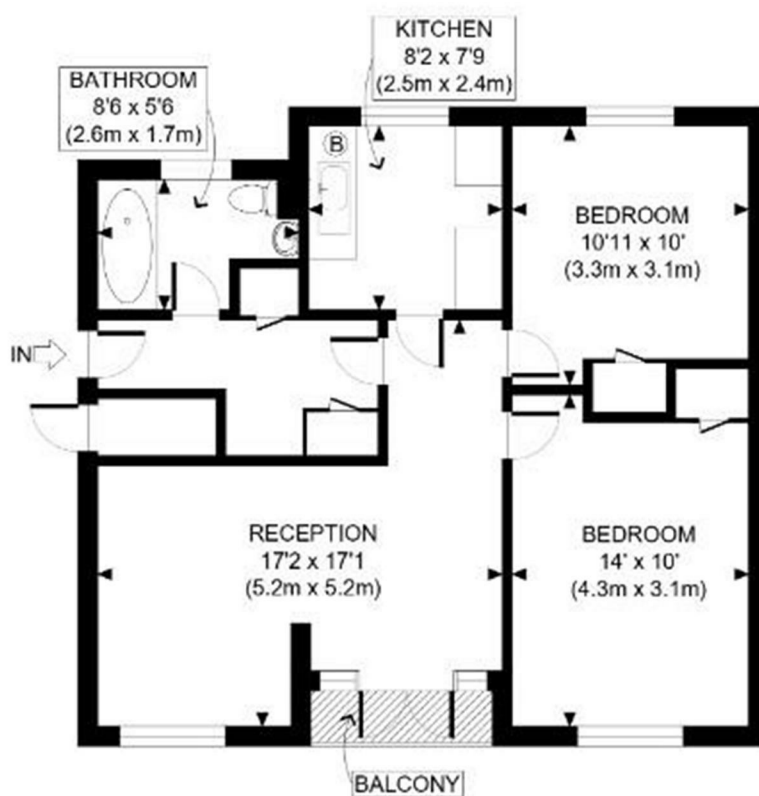
A large two double bedroom apartment on the ground floor of this well built block in a superb location in Greenford. Close to local amenities, transport links and schools, this home offers superb space for young couples and investors to get a well appointed property in a great location. The property comprises a large through living and dining room, separate kitchen, two full size double bedrooms, three piece bathroom suite and ample storage in the property, and in the communal hallway. Being ground floor it has easy access from the communal gardens and garage /parking area and has its own private veranda. For viewings by appointment only, call Rolfe East on 0208 579 1111.



Council Tax Band: C







GROUND FLOOR
GROSS INTERNAL
FLOOR AREA 637 SQ FT

APPROX. GROSS INTERNAL FLOOR AREA: 637 SQ FT/ 59 SQM

Viewings

Viewings by arrangement only. Call 020 8579 1111 to make an appointment.